

About The Apparel

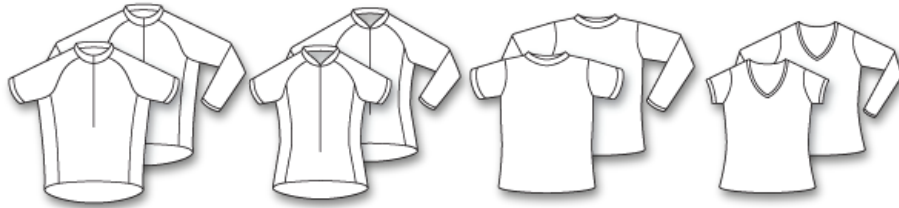
All of our custom jerseys and technical t-shirts) are made from 100% polyester wicking fabric. The styles include jerseys and t-shirts, in both men and women-specific cuts.

Jerseys are available in short and long sleeves, as well as sleeveless. Jerseys are available in three fits:

- Relaxed / Mountain : loose-fitting, no elastics
- Club : form-fitting, elasticized waist
- Race : tight fit, elasticized waist and cuffs

Technical T-shirts are available in short or long sleeves, in male and female cuts. The male cut has a crew neck, the female cut has a "v" neck.

Go to <http://chroniccycling.com/downloads> for a PDF size chart and templates of all the styles shown here:



Printing Process

All our custom cycling garments are sublimated. Sublimation is a printing process whereby the image on a sheet of paper is transferred onto fabric through heat and pressure. The heat and pressure cause the ink on the paper to turn to a gas which permanently impregnates the fabric. The benefit of this process is that the image is permanent and will not crack or fade like silk screening. Because the ink impregnates the fabric and does not lay on top of the fabric like silk screen printing, it does not interfere with the wicking properties or breathability of the garment.

Colors

Sublimation is printed using a process know as "CMYK" (for Cyan, Magenta, Yellow, and black). This process allows you to have many colors in your image. However, we can not guarantee an exact match of a Pantone spot color with CMYK printing. Due to the numerous variables involved with printing we are not able to offer color matching at this time. The flip side of that is there is no limit on colors.

How To Order

1. Go to <http://chroniccycling.com/downloads/> to download the order form. Select and specify the quantity, sizes and style of garments that you want to order, and return it by email (custom@chroniccycling.com), or by faxing it to 512-462-9265.
2. Submit artwork. Up to two hours of artwork time are included with each order. This time is used for jersey layout (for approval), and production files set-up. This time does not include design, file cleanup or touch-up, corrections, etc.. Artwork submitted must meet Chronic Cycling's artwork guidelines (next page). If you wish, Chronic Cycling may design your jerseys for a fee.
3. Pay a 50% deposit. All major credit cards are accepted.
4. Chronic Cycling produces an illustration of the jersey for your approval.
5. Submit approval, or revisions.
6. Upon approval, jerseys are sent to production, which takes 6 to 8 weeks depending on the quantities and current workload.
7. Upon completion, you will be billed for the remaining 50%. Items will be shipped immediately after payment. Again, all major credit cards are accepted through Paypal. (we must ship to the cardholder's billing address).
8. All orders ship ground unless requested otherwise.

Artwork Guidelines

- Artwork should be in vector format saved as an Adobe Illustrator or .EPS vector file.
- If a raster image (i.e. JPG, TIFF, BMP, or PNG) must be used, make sure it is of very high resolution (150-300dpi at full printing size). For example, if you want the image to be printed at 5" x 5", please make it at least 150 dpi at 5" x 5". In the case of JPG's, please make sure to use as little compression as possible.
- Vector art files with imported (placed) raster images in them need them embedded into the document. If they are not embedded, we may not be able to see them. If there are missing imported images in your files, we will email you so you can send them to us. We will hold your order until we get all files from you. Please provide the imported image as well.
- All fonts must be converted to vector paths or outlines.
- Files must be an exact representation of what will be printed on the jersey. This means all elements are of correct size, placement, proportion & color. Images for the front of the garment and the back must be on separate pages and labeled accordingly.
- You may go to <http://chroniccycling.com/downloads> and download templates for the following:
 - Men's Jersey, short sleeve
 - Women's Jersey, short sleeve
 - Men's T-Shirt, crew neck, short sleeve
 - Women's T-Shirt, v-neck, short sleeve

Design Services

If the paragraph above made your head spin, you may need a graphic designer. Contact Chronic Cycling to discuss how we can help you create "digital print-ready" art for production. Design for custom clothing clients goes for \$50/hour, and is typically no more than four hours.

Note about design services: As stated above, the artwork time included with your order is used for jersey layout (for approval), and production files set-up. The Design Services discussed here include the "ideation" of your jerseys, vectorization and clean-up of submitted graphics, sketches, securing of support material, revisions, etc., in order to produce print-ready artwork. It does not include logo or identity creation, unless specifically contracted for such service.

Shipping

We ship via US Postal Service Priority Mail, or UPS Ground, from Zip code 78745 (Austin, TX).

Shipping charges are as follows:

Number of Items	Standard Domestic (2-5 days)	Express Domestic (1-2 days)
1-4	\$7	\$25
5-10	\$14	\$40
11-49	\$21	\$60
51 and more	\$35	\$80

Use this information to estimate your shipping charges and include them when you fill out your order form.

Note: Please keep in mind that shipping time is not part of the regular production time for Chronic Cycling.